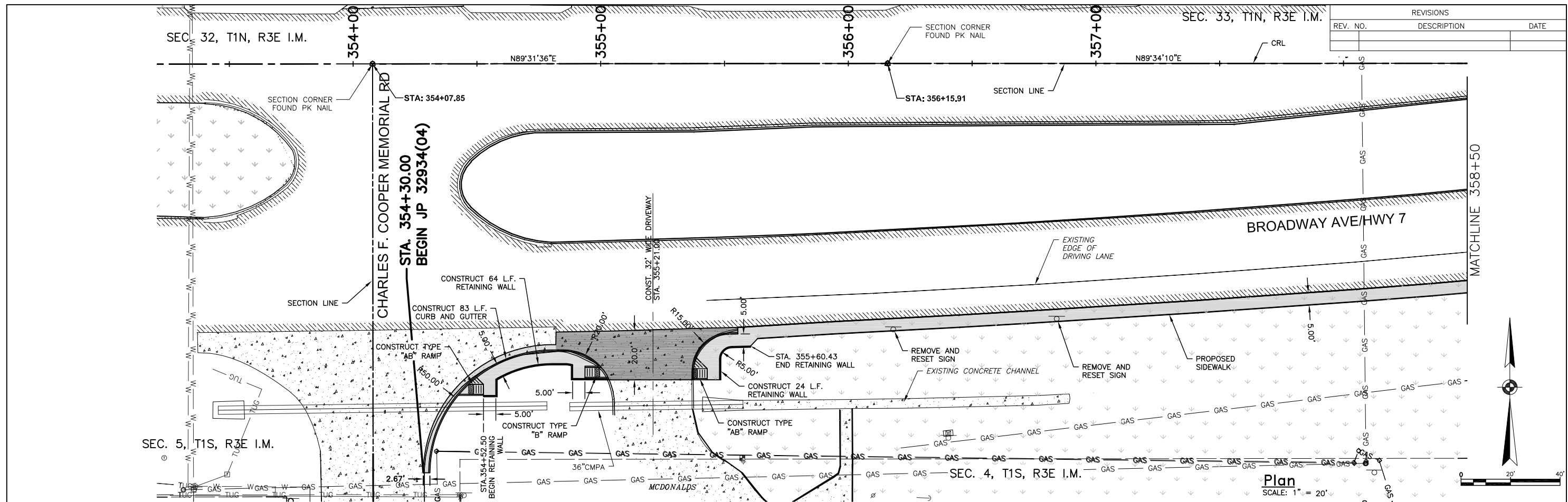


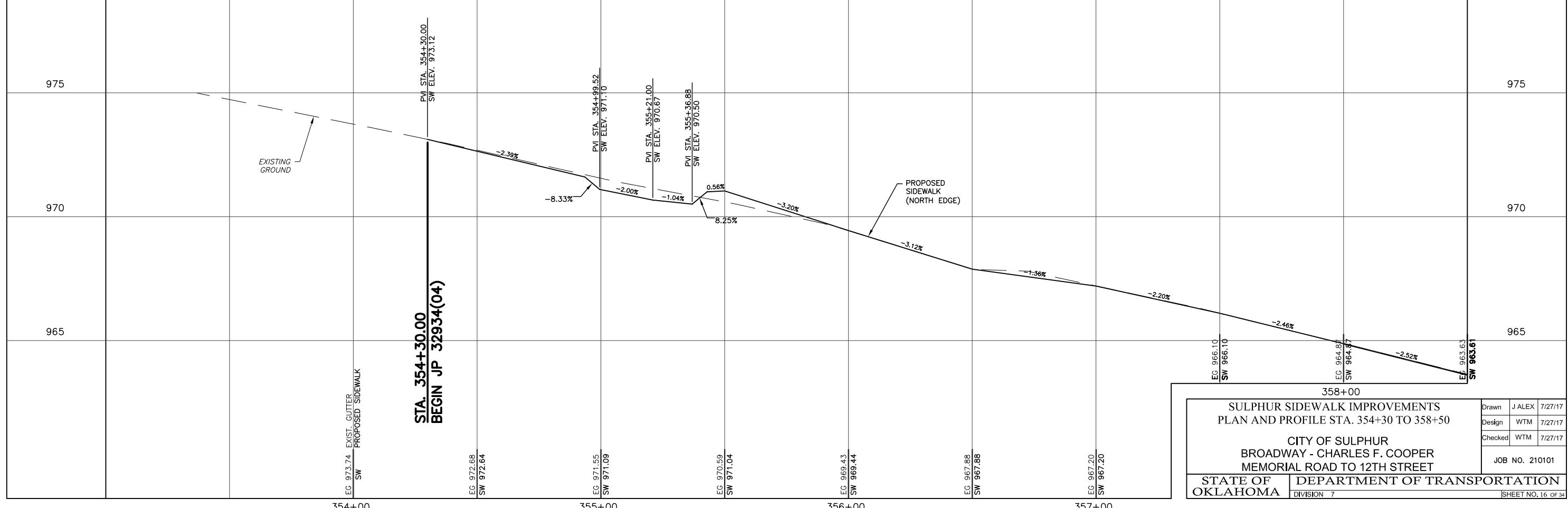
J:\Sulphur\210101\card\2017 Phase 1\210101 GRADING_01.dwg, 8/10/2017 10:14:59 AM, kmA, 1:2.04657



REVISIONS		
REV. NO.	DESCRIPTION	DATE

LEGEND

EXIST. ASPHALT	EXIST. GRASS	EXIST. GRAVEL	EXIST. CONCRETE	CLEAN OUT	POWER POLE	GASOLINE FILL CAP	TELEPHONE PEDESTAL	DRAINAGE INLET	SIGN	GAS METER	VENT PIPE	FLAG POLE	LIGHT POLE	WATER VALVE
BENCH MARK	SANITARY SEWER MH	GAS LINE MARKER	TRAFFIC VAULT	FIRE HYDRANT	SIGNAL VAULT	GUY ANCHOR	WATER METER	STORM SEWER MH	MAIL BOX	YARD HYDRANT	PROPOSED SIDEWALK	PROPOSED DRIVE		



SULPHUR SIDEWALK IMPROVEMENTS PLAN AND PROFILE STA. 354+30 TO 358+50		Drawn J ALEX 7/27/17
CITY OF SULPHUR BROADWAY - CHARLES F. COOPER MEMORIAL ROAD TO 12TH STREET		Design WTM 7/27/17
STATE OF OKLAHOMA DIVISION 7		Checked WTM 7/27/17
JOB NO. 210101		
SHEET NO. 16 OF 34		